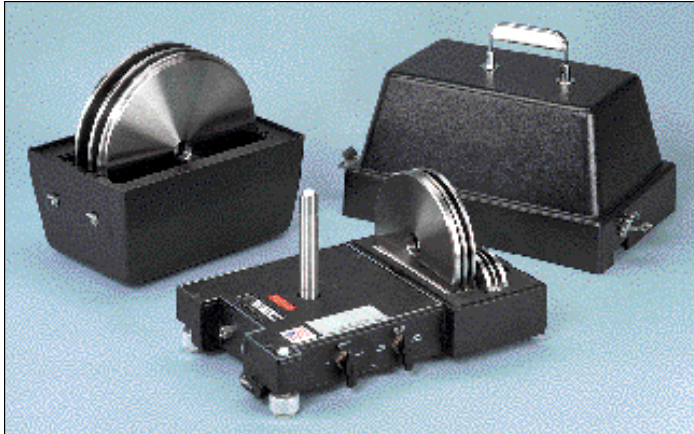




## AMETEK Deadweight Test Kits



The Model RK is a self-regulating pressure standard designed for use in ranges from 4" H<sub>2</sub>O through 300 psig.

An integral weight storage compartment for ranges to 50 psig or equivalent is contained in a cast metal base which houses the workings of the unit (additional weights for ranges above 50 psig or equivalent are packaged in a separate carrying case).

The tester comes with a carrying cover of high strength impact-resistant material. The tester base includes a built-in mounting to fit most standard photographic type tripods.

### SPECIFICATIONS

<b>Accuracy</b>	±0.5% of indicated reading. Stainless steel weights; calibrated for international standard gravity 980.665 Gals. (cm/sec <sup>2</sup> ) or user's local gravity
<b>Repeatability</b>	0.005% of output reading
<b>Temperature Coefficient</b>	0.00167% of output pressure per °C, based on 23°C
<b>Supply Pressure</b>	Instrument quality air per ISA Quality Standard S 7.3. Maximum: 450 psi Minimum: 30 psi or 150% of output pressure, whichever is greater
<b>Flow Rate</b>	1 SCFH at 4" H <sub>2</sub> O output, 60 SCFH at 300 psi output
<b>Case Size</b>	Tester: 15" x 9.5" x 8", Weights: 8.5" x 12" x 11.5"
<b>Total Weight</b>	Tester: 18 to 31.5 lbs., Weights: 17.5 to 61.5 lbs.
<b>Input &amp; Output Connections</b>	1/8" NPT female
<b>Optional Accuracy Available</b>	.025% and .015%

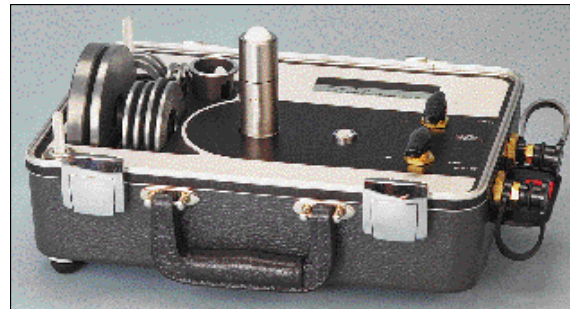
### ORDERING INFORMATION

Catalog No.	Model	Range	Minimum Increments	Price
AM900401	RK-300WC-SS	4-314" H <sub>2</sub> O	1" H <sub>2</sub> O	\$4,630.00
AM900402	RK-1600WC-SS	4-1614" H <sub>2</sub> O	1" H <sub>2</sub> O	5,676.00
AM900403	RK-100-SS	1-101 psi	1 psi	4,673.00
AM900404	RK-300-SS	1-301 psi	1 psi	6,258.00
NISTDW3	NIST Traceable Certificate with Data			595.00

## AMETEK Portable Pressure Tester



The Model PKII is a self-regulating, portable, primary type pressure standard designed for use in ranges from 4" H<sub>2</sub>O through 30 psi. The PKH is self-contained in a rugged plastic case designed for "closed-case" operation, eliminating wind problems. The weights are stacked in foam pockets in the case for convenient handling. Additional space is provided in the case and cover for accessory equipment and tools.



### SPECIFICATIONS

<b>Accuracy</b>	±0.05%; optional accuracy .025% and .015% of indicated reading. Stainless steel weights. Calibrated for International Standard Gravity 980.665 Gals. (cm/sec <sup>2</sup> ) or user's local gravity. ±0.5%, with non-magnetic die cast alloy weights available as an economical alternative in non-corrosive environments. Calibrated at U.S. Mean Gravity 980.000 Gals. (cm/sec <sup>2</sup> )
<b>Repeatability</b>	.005% of output reading
<b>Temperature Coefficient</b>	.00167% of output pressure per °C, based on 23°C
<b>Supply Pressure</b>	Instrument quality air per ISA Quality Standard S7.3. Maximum: 100 psi. Minimum: 30 psi or 150% of output pressure, whichever is greater
<b>Flow Rate</b>	1.0 SCFH at 4" H <sub>2</sub> O output, 11.0 SCFH at 30 psi output
<b>Case Size</b>	13 1/8" x 9 1/4" x 6 3/8" on 4"-104" H <sub>2</sub> O and 4"-254" H <sub>2</sub> O testers, and 13 1/8" x 8 1/2" on 4"-854" H <sub>2</sub> O testers.
<b>Total Weight</b>	14 to 23 lbs. (1/4" tube fitting)

### ORDERING INFORMATION

Catalog No.	Model	Range	Minimum Increment	Price
AM900501	PKII-30-SS	1-30 psi	1 psi	\$4,434.00
NISTDW2	NIST Traceable Certificate with Data			495.00